

1.1. Product: VPI Smart Step Rubber Stair Treads

1.2. Supplier:

VPI Corporation

3123 South 9th Street, Sheboygan, Wisconsin. Tel: (800) 874-4240

Web: <http://www.vpicorp.com>

1.3. Product Description:

VPI Smart Step Rubber Stair Treads are a line of stair treads that are available with an integrated riser or as a regular tread without a riser. The Smart Step Stair Treads are developed as a coordinated stairwell management system consisting of wall base, landing tile, and stair treads in matching colors. Smart Stair Treads are offered in 7 standard colors with matching landing tile, wall base & other accessories.

1.3.1. Construction:

VPI Smart Step Rubber Stair Treads are manufactured from a homogeneous composition of rubber, high quality additives, and colorants to meet the performance requirements of ASTM F 2169 Standard Specification for Resilient Stair Treads, Type TP Rubber, Class 2, Group 1 and 2, Grade 1,

1.3.2. Super Duty Integrated Riser Tread System:

1. RISSXXRXX Round Raised Disk Pattern Rubber – Standard Square Nose Stair Tread with Integrated Riser, 20" (51 cm) overall depth, 2" (5.08 cm) square nose configuration, .190" (4.83 mm) to .100" (2.54mm) tapered wall 13" (33 cm) tread depth with 7" (17.8 cm) integral riser. See drawing RISS-XXR-XX.

2. RISGXXRXX Round Raised Disk Pattern Rubber – Tactile Square Nose Stair Tread with Integrated Riser, 20" (51 cm) overall depth, 2" (5.08 cm) square nose configuration, .190" (4.83 mm) to .100" (2.54mm) tapered wall 13" (33 cm) tread depth with 7" (17.8 cm) integral riser with 2" (5.08 cm) wide Tactile Grip strip. See drawing RISG-XXR-XX

3. RISVXXRXX Round Raised Disk Pattern Rubber – High Viz Square Nose Stair Tread with Integrated Riser, 20" (51 cm) overall depth, 2" (5.08 cm) square nose configuration, .190" (4.83 mm) to .100" (2.54mm) tapered wall 13" (33 cm) tread depth with 7" (17.8 cm) integral riser with 2" (5.08 cm) wide High Visibility strip. The 2" (5.08 cm) wide carborundum strip of contrasting color complies with A.D.A., Visually Impaired, and California Accessibility Title 24 requirements - code 11B-504.4.1. See drawing RISV-XXR-XX

4. RISEXXRXX Round Raised Disk Pattern Rubber – Luminous Emergency Egress Square Nose Stair Tread with Integrated Riser, 20" (51 cm) overall depth, 2" (5.08 cm) square nose configuration, .190" (4.83mm) to .100" (2.54mm) tapered wall 13" (33 cm) tread depth with 7" (17.8 cm) integral riser with 1" (2.54 cm) wide Photoluminescent strip compliant with NYC LL26 RS 6.1 2.2.2, NPFA 101 7.2.2.5.5.1 & IBC 2009, 2012 1024.2.1. See drawing RISE-XXR-XX

5. RISSXXHXX Hammered Pattern Rubber – Standard Square Nose Stair Tread with Integrated Riser, 20" (51 cm) overall depth, 2" (5.08 cm) square nose configuration, .190" (4.83 mm) to .100" (2.54mm) tapered 13" (33 cm) tread depth with 7" (17.8 cm) integral riser. See drawing RISS-XXH-XX.

1.3.3. Super Duty Regular Tread System:

1. RRSSXXRXX Round Raised Disk Pattern Rubber – Standard Square Nose Stair Tread 12.5" (31.8 cm) overall depth, 2" (5.08 cm) square nose configuration, .190" (4.83 mm) to .125" (3.18mm) tapered wall. See drawing RRSS-XXR-XX.

2. RRSXXRXX Round Raised Disk Pattern Rubber – Tactile Square Nose Stair Tread 12.5" (31.8 cm) overall depth, 2" (5.08 cm) square nose configuration, .190" (4.83 mm) to .125" (3.18mm) tapered wall with 2" (5.08 cm) wide Tactile Grip strip. See drawing RRSXX-XXR-XX.

3. RRSVXXRXX Round Raised Disk Pattern Rubber – High Viz Square Nose Stair Tread 12.5" (31.8 cm) overall depth, 2" (5.08 cm) square nose configuration, .190" (4.83 mm) to .125" (3.18 mm) tapered wall with 2" (5.08 cm) wide High Visibility strip. The 2" (5.08 cm) wide carborundum strip of contrasting color complies with A.D.A., Visually Impaired, and California Accessibility Title 24 requirements - code 11B-504.4.1. See drawing RRSV-XXR-XX.

4. RRSEXXRXX Round Raised Disk Pattern Rubber – Luminous Emergency Egress Square Nose Stair Tread 12.5" (31.8 cm) overall depth, 2" (5.08 cm) square nose configuration, .190" (4.83mm) to .125" (3.18 mm) tapered wall with 1" (2.54 cm) wide Photoluminescent strip compliant with NYC LL26 RS 6.1 2.2.2, NPFA 101 7.2.2.5.5.1 & IBC 2009, 2012 1024.2.1. See drawing RRSE-XXR-XX.

5. RRSSXXHXX Hammered Pattern Rubber – Standard Square Nose Stair Tread 12.5" (31.8 cm) overall depth, 2" (5.08 cm) square nose configuration, .190" (4.83 mm) to .125" (3.18mm) tapered wall. See drawing RRSS-XXH-XX.

2. PRODUCT PERFORMANCE AND TECHNICAL DATA:

2.01. ASTM F2169 Standard Specification for Resilient Stair Treads. Meets All Requirements: Type TP Rubber, Class 2, Groups 1 and 2, Grade 1

2.02. ASTM D2240 Shore A Hardness – 95 Shore A

2.03. ASTM F1514 Heat Stability Color Change - $\Delta E^* < 4.8$

2.04. ASTM F1515 Light Stability Color Change – $\Delta E^* < 4.2$

2.05. ASTM E648 Flammability – 0.83/Class 1

2.06. ASTM E662 Smoke – 328 (Flaming), 137 (Non-Flaming)

2.07. ASTM D2047 Static Coefficient of Friction – Leather 0.64

2.08. ANSI B101.1 Static Coefficient of Friction – 0.57

2.09. Photoluminescent Nose Requirements– Compliant to IBC 2009, 2012, 1024.2.1; NFPA 101 7.2.2.5.5.1; NYC LL26 RS 6.1 2.2.2

2.10 California Title 24 compliant to CA code 11B-504.4.1

2.10. ASTM F925 Chemical Resistance – Very Good – No More Than Slight Changes

2.11. Gauge – 0.125”

2.12. Sizes – 48”, 72”; other lengths available with minimum order quantity

2.13. Depth – 20” for integrated riser or 12.5” for regular

2.14. Floorscore certified to SCS-EC10.3-2014 v4.0, registration # SCS-FS-05283

2.15. Nosing Depth – 2.0”

2.16. Nosing Radius – 0.15”

3. ADHESIVES:

3.1. VPI 503 Acrylic Adhesive

VPI 503 is a solvent free, one part acrylic wet set adhesive approved for all types of sub-floors on or above grade. The adhesive is good for porous and non-porous areas.

Substrate requirements are MVER<6lbs, RH ≤85%, pH of 7 – 11.

Trowel type: 1/16” x 1/16” Square Notched Trowel.

Coverage: 90 - 135 ft² / gal, depending on porosity of substrate, application style and environment. In applications demonstrating spread rates that are less than 90 ft², additional adhesive should be purchased as required. **See label for detailed application instructions.**

3.2. VPI NC-2 Nose Caulk

VPI NC-2 is a solvent-free, two-component Epoxy Nose-Caulking Compound designed for use with rubber stair treads. It's a non-flammable, high-performance epoxy adhesive, recommended for indoor stair installations over porous and non-porous substrates. It is recommended for round nosing, providing support to the nose or rubber stair treads. Stairs (substrate) must be structurally sound, dry, clean and free of dirt, dust, grease, paint, curing compounds, sealers, or any other extraneous material which may interfere or compromise adhesion. Application over concrete stairs requires the concrete to be fully cured and dry. Adequate adhesive must be applied to the corner of the stair tread nose so that when placed into position all voids are filled. **See Nose-Caulk label for detailed application instructions.**

4. ENVIRONMENTAL STANDARDS

4.1 Contributes towards LEED Credit V4 option 2 Low emitting materials, indoor environmental quality, FloorScore Certification, CHPS 2.2.3; Flooring Systems

4.2. CALGreen, CA Code of Regulations title 24, Part II,2010, Sections 4.504.4/5.504.4.6: Resilient Flooring Systems

4.3. ANSI/ASHRAE/USGBC/IES Standard 189.1-2009,Section 8.4.2.3: Floor Covering Materials

4.4. Collaborative for High Performance Schools(CHPS) rating system, 2009 Criteria EQ2.2.3: Flooring Systems

4.5. Green Guide for Healthcare, V2.2, 2007, EQ Credit 4.3: LEM-Flooring Systems

5. INSTALLATION: See installation sheets for detailed instructions.

The areas to receive stair treads should be clean and maintained at a uniform temperature between 65°F and 85°F before, during, and after installation is complete. The stair treads and adhesives need to be conditioned in the same manner, by acclimating them in the same space for a period of 48 hours prior to installation. Boxes need to be kept out of direct sunlight or close proximity to air conditioning units.

Sub-floor preparation needs to follow detailed instructions on instruction sheet. Use the instruction details regarding a butt joint or lap joint under the nose. Note specific instructions with regards to porous and nonporous subfloors and when to lay treads after applying the adhesive.

6. MAINTENANCE:

Stair treads should be maintained by hand, with maintenance procedures not to begin until 2 days after installation. Follow maintenance instructions as detailed in the installation instruction manual.

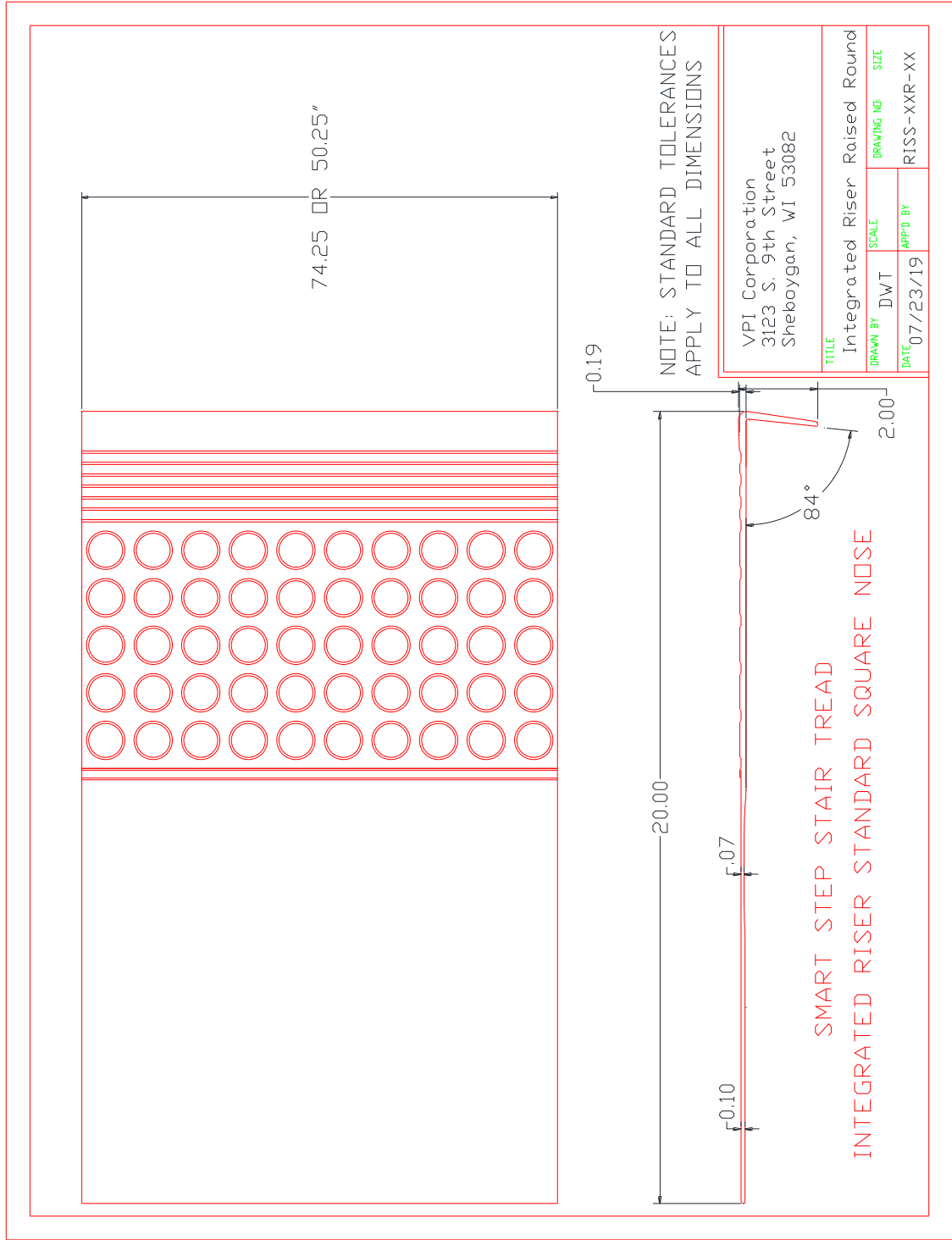
7. AVAILABILITY AND COST

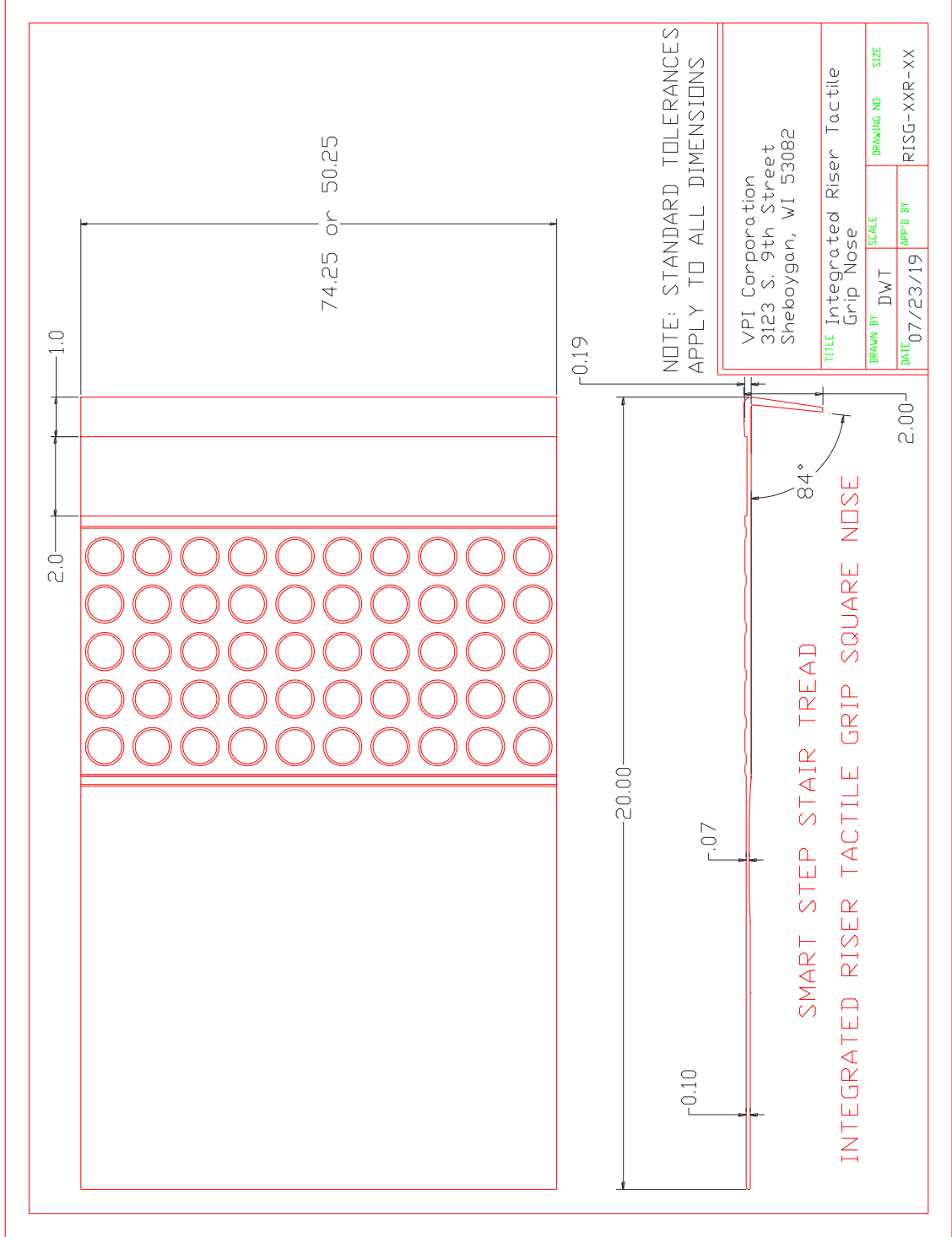
Available from VPI and VPI Distributors Nationwide.

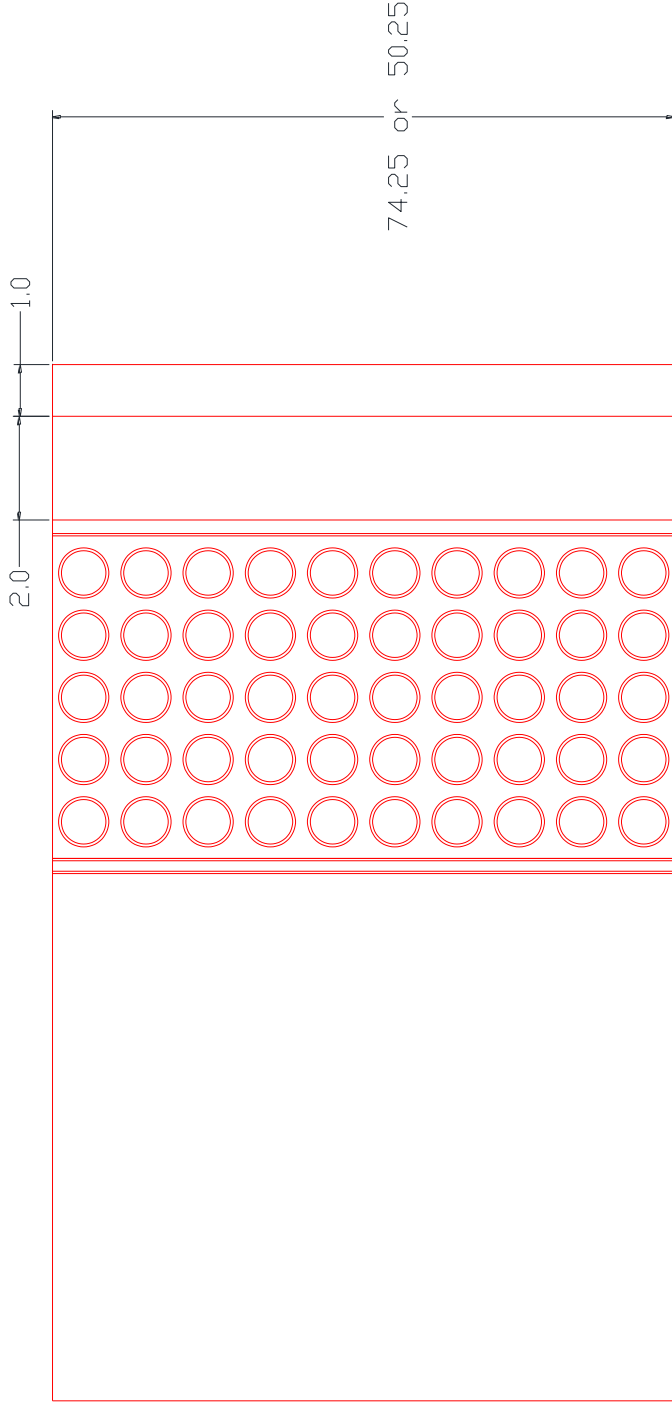
Available in Jet, Pewter, London Fog, Spice, Café Au Lait, Burnt Umber, and Charcoal colors.

8. WARRANTY

Limited 12 year warranty against defects in manufacturing and workmanship. For complete details, contact VPI Corporation.

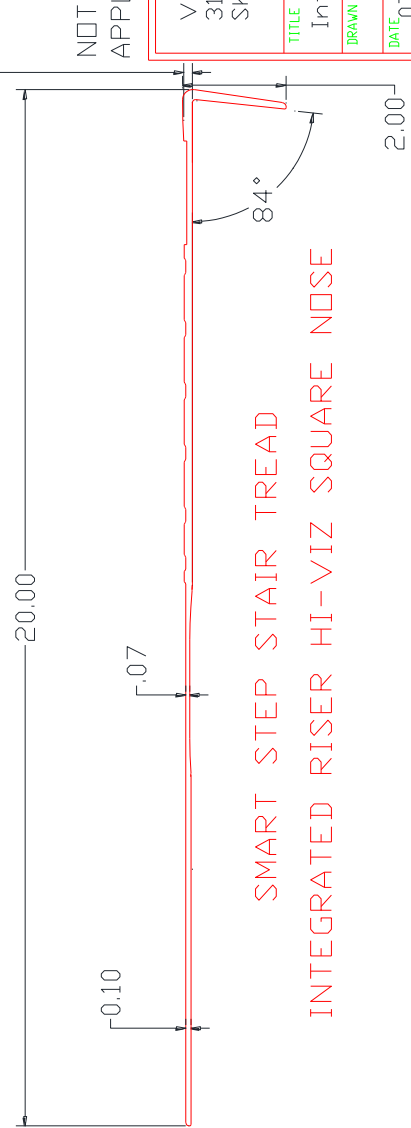




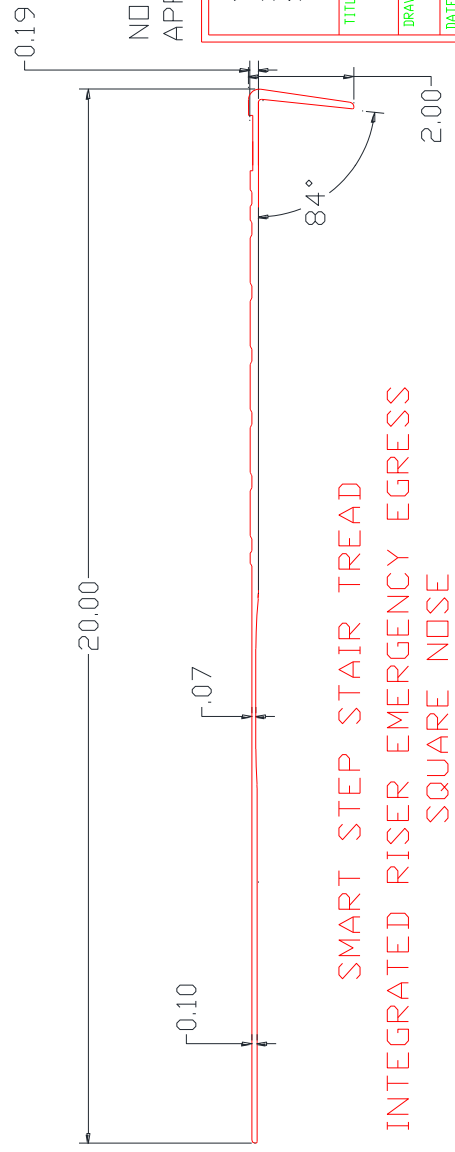
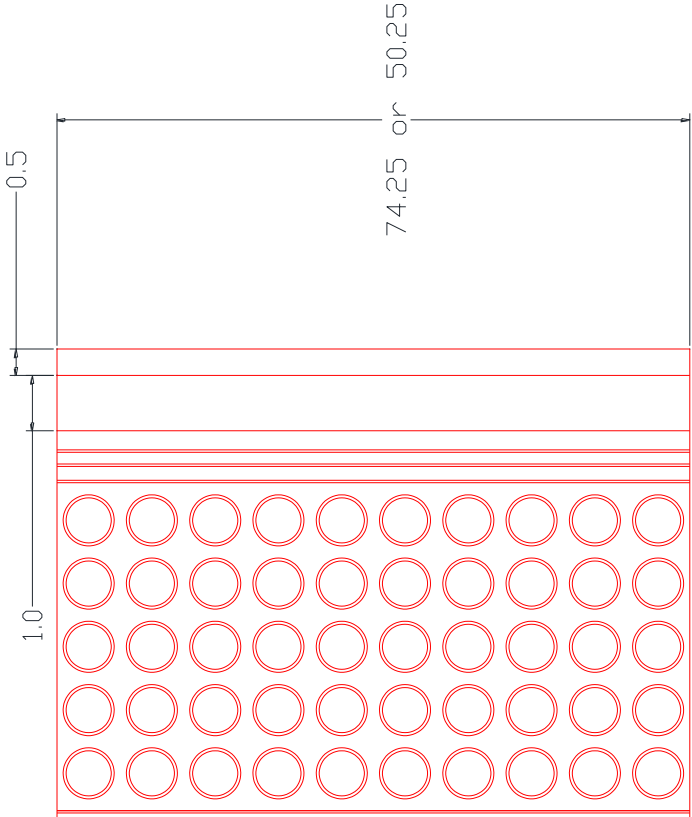


NOTE: STANDARD TOLERANCES
APPLY TO ALL DIMENSIONS

VPI Corporation 3123 S. 9th Street Sheboygan, WI 53082			
TITLE	Integrated Riser Hi-Viz Nose		
DRAWN BY	DWT	SCALE	DRAWING NO. SIZE
DATE	07/23/19	APP'D BY	RISV-XXR-XX



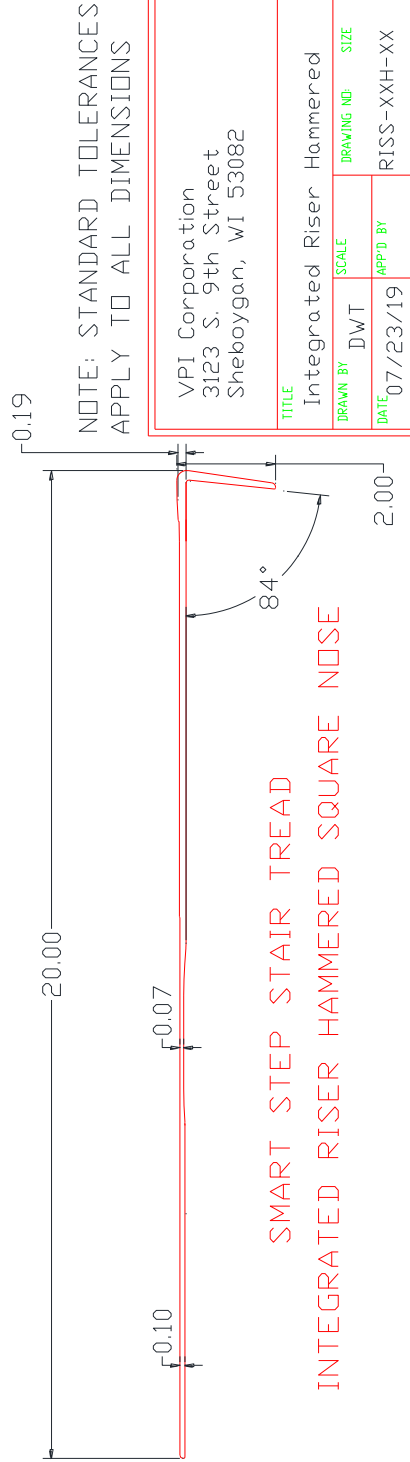
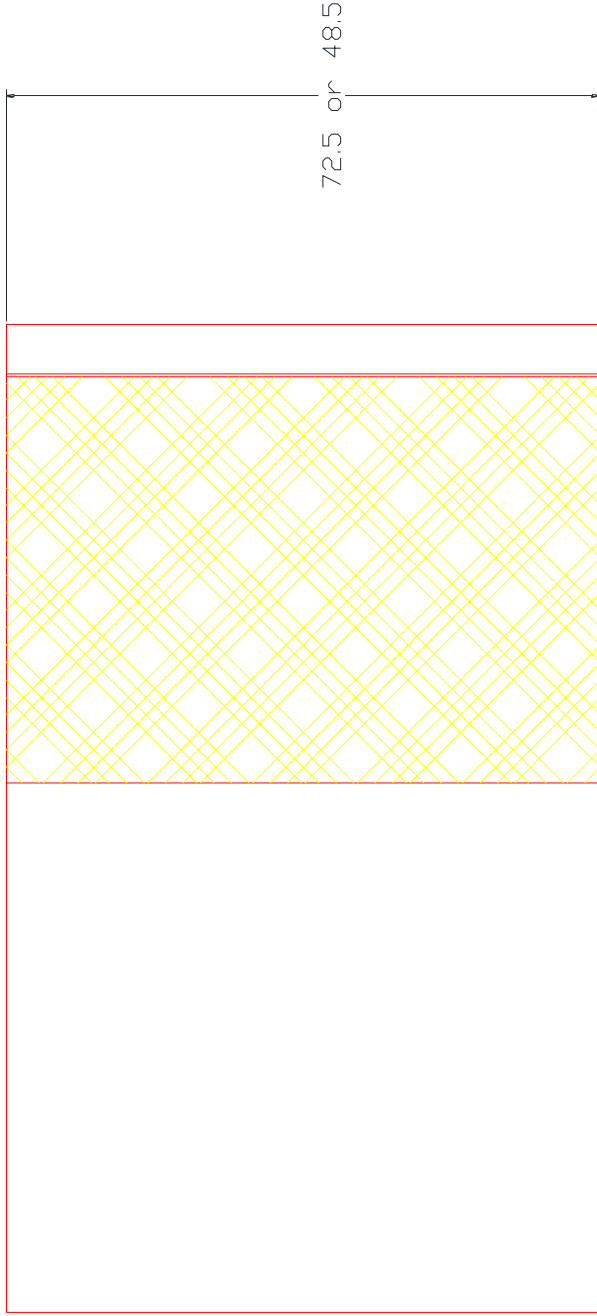
SMART STEP STAIR TREAD
INTEGRATED RISER HI-VIZ SQUARE NOSE

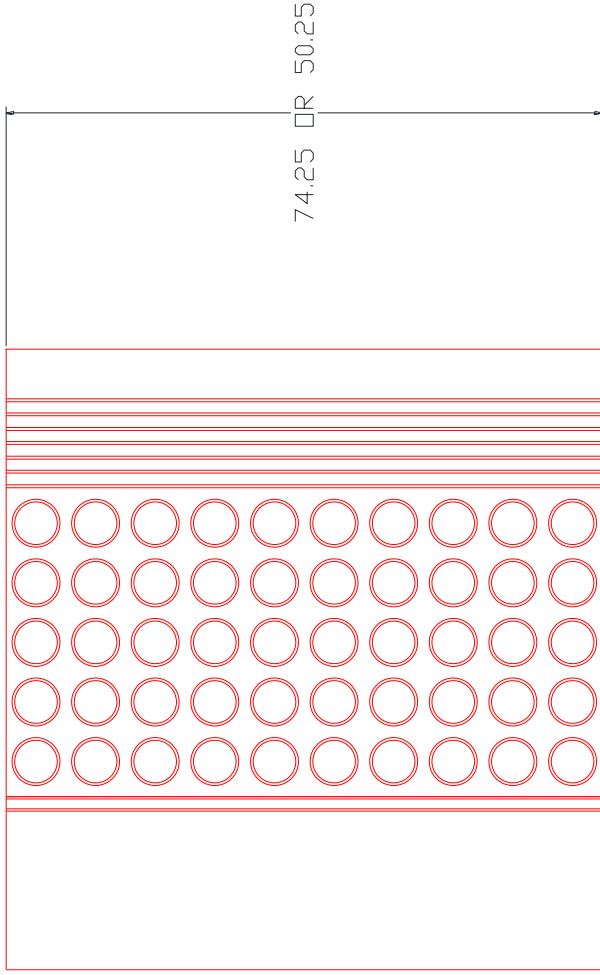


NOTE: STANDARD TOLERANCES
APPLY TO ALL DIMENSIONS

VPI Corporation 3123 S. 9th Street Sheboygan, WI 53082	
TITLE	Integrated Riser Emergency Egress Nose
DRAWN BY	DWT
DATE	07/23/19
SCALE	
DRAWING NO.	RISE - XXR - XX
SIZE	
APP'D BY	

SMART STEP STAIR TREAD
INTEGRATED RISER EMERGENCY EGRESS
SQUARE NOSE



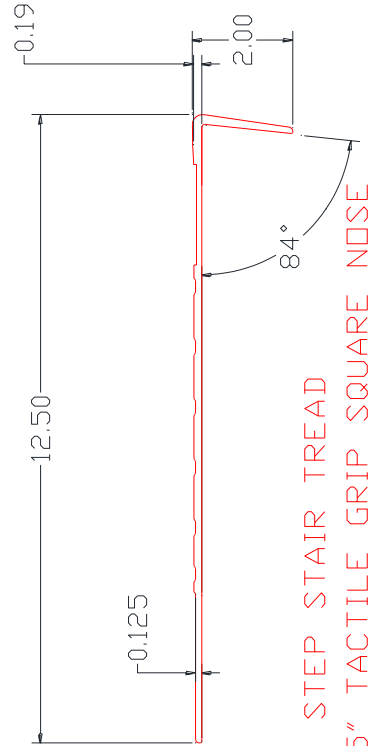
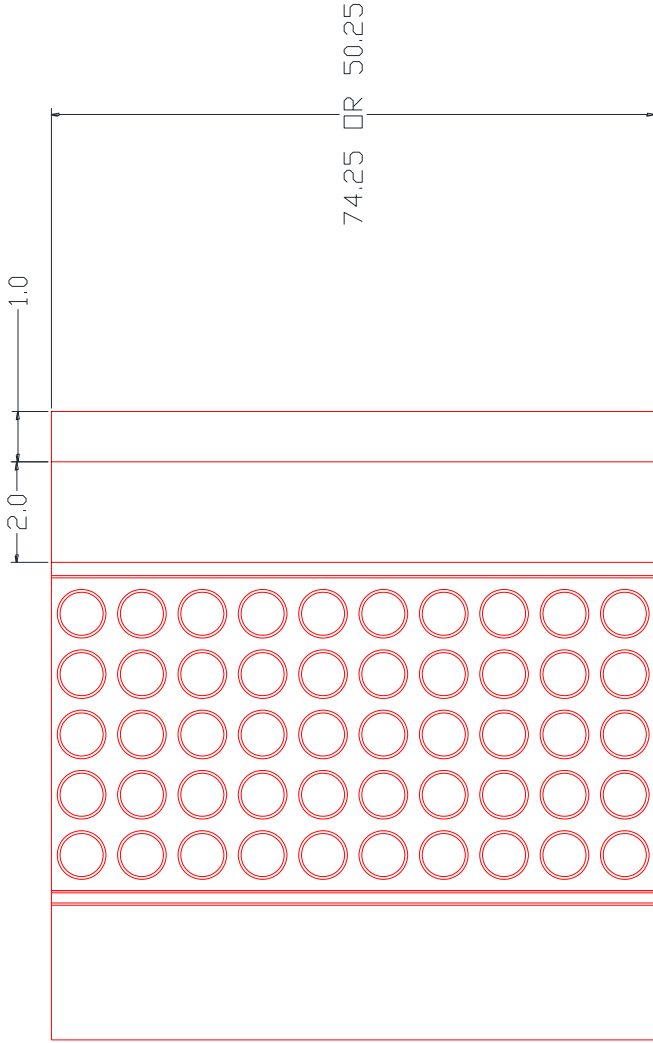


NOTE: STANDARD TOLERANCES
APPLY TO ALL DIMENSIONS

VPI Corporation
3123 S. 9th Street
Sheboygan, WI 53082

TITLE		Regular Raised Round	
DRAWN BY	SCALE	DRAWING NO.	SIZE
DWT			
DATE	APP'D BY	RRSS-XXR-XX	
07/23/19			

SMART STEP STAIR TREAD
REGULAR 12.5" STANDARD SQUARE NOSE

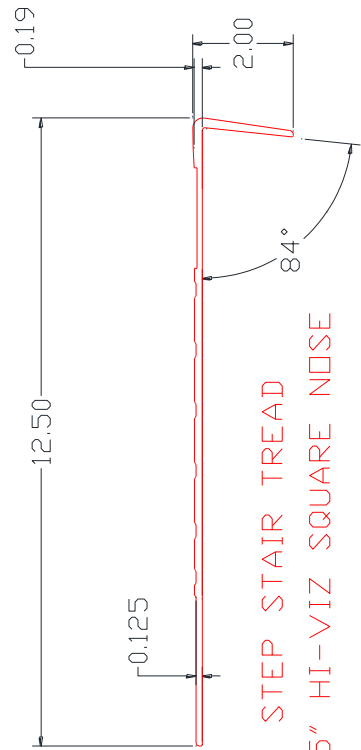
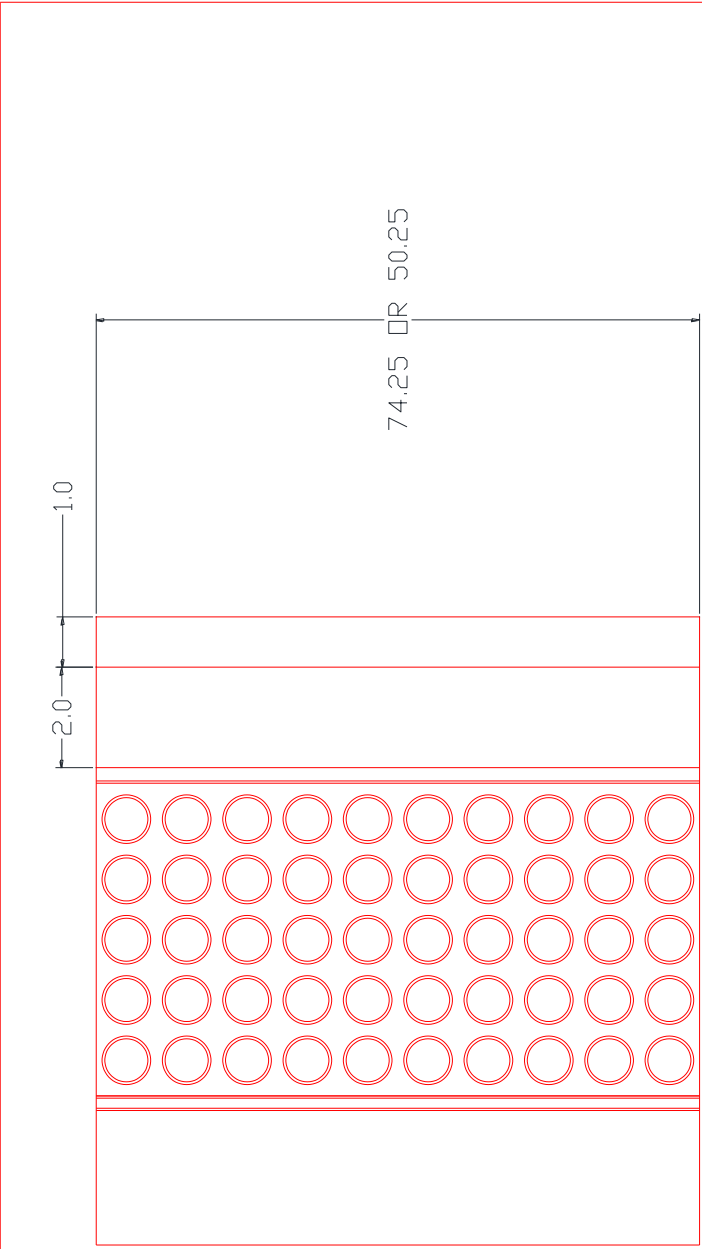


NOTE: STANDARD TOLERANCES
APPLY TO ALL DIMENSIONS

VPI Corporation
3123 S. 9th Street
Sheboygan, WI 53082

TITLE		Regular Tactile Grip Nose	
DRAWN BY	SCALE	DRAWING NO.	SIZE
DWT			
DATE	APP'D BY	RRSG-XXR-XX	
07/23/19			

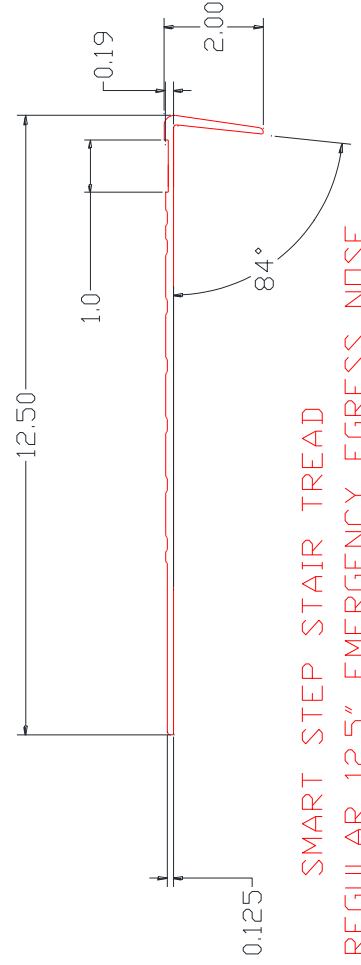
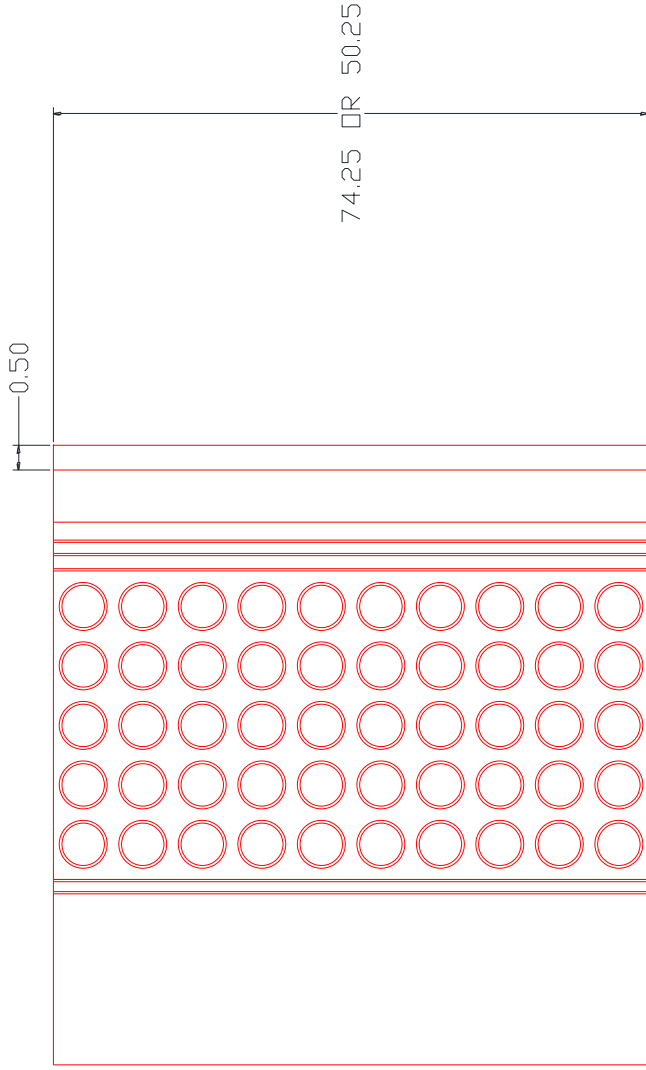
SMART STEP STAIR TREAD
REGULAR 12.5" TACTILE GRIP SQUARE NOSE



SMART STEP STAIR TREAD
REGULAR 12.5" HI-VIZ SQUARE NOSE

NOTE: STANDARD TOLERANCES
APPLY TO ALL DIMENSIONS

VPI Corporation 3123 S. 9th Street Sheboygan, WI 53082			
TITLE	Regular Hi-Viz Nose		
DRAWN BY	DWT	SCALE	DRAWING NO. SIZE
DATE	07/23/19	APPRO BY	RRSV-XXR-XX

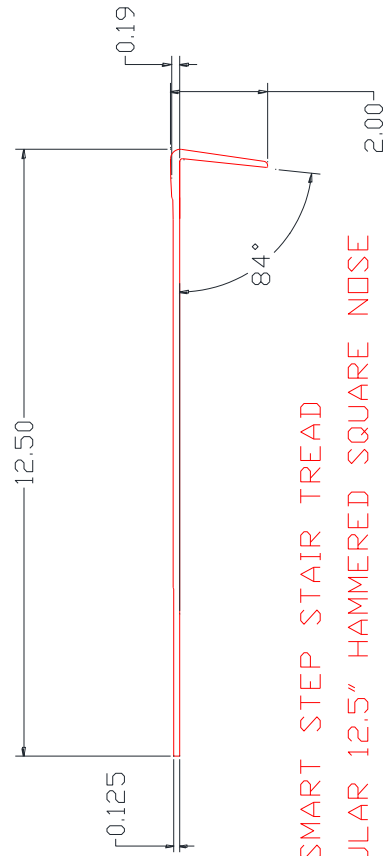
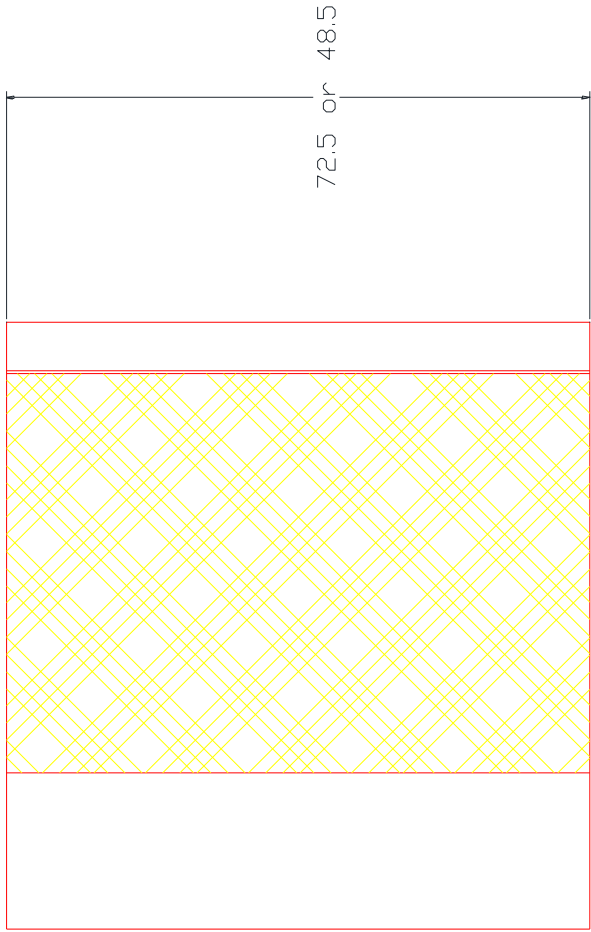


NOTE: STANDARD TOLERANCES
APPLY TO ALL DIMENSIONS

VPI Corporation
3123 S. 9th Street
Sheboygan, WI 53082

TITLE		Regular Emergency Egress Nose	
DRAWN BY	SCALE	DRAWING NO.	SIZE
DWT		RRSE-XXR-XX	
DATE	APP'D BY		
07/23/19			

SMART STEP STAIR TREAD
REGULAR 12.5" EMERGENCY EGRESS NOSE



NOTE: STANDARD TOLERANCES
APPLY TO ALL DIMENSIONS

VPI Corporation
3123 S. 9th Street
Sheboygan, WI 53082

TITLE		Regular Hammered	
DRAWN BY	DWT	SCALE	DRAWING NO.
DATE	07/23/19	APP'D BY	RRSS-XXH-XX

SMART STEP STAIR TREAD
REGULAR 12.5" HAMMERED SQUARE NOSE